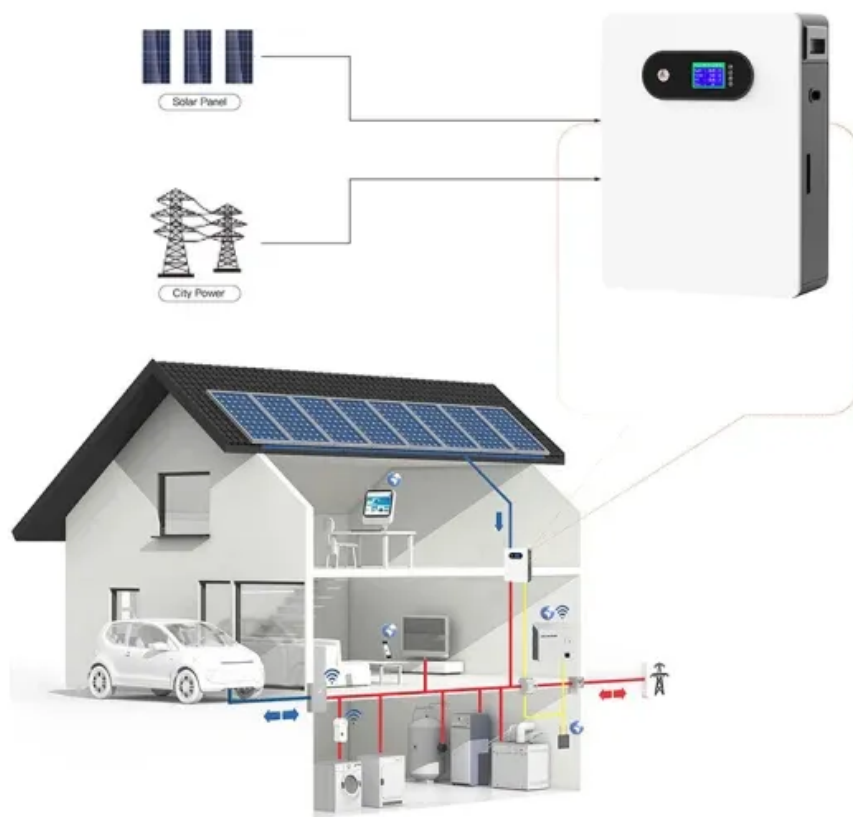


About the internal energy generated by photovoltaic panels



Overview

Solar PV relies on a natural property of "semiconductor" materials like silicon, which can absorb the energy from sunlight and turn it into electric current. This energy can be used to generate electricity or be stored in batteries or thermal storage. Below, you can find resources and information on the . A photovoltaic (PV) cell, commonly called a solar cell, is a nonmechanical device that converts sunlight directly into electricity. Sunlight is composed of photons, or particles of solar energy. Solar energy harnesses radiation, 2.

About the internal energy generated by photovoltaic panels



How Do Solar PV Panels Generate Electricity

Solar PV panels are devices that convert sunlight directly into electricity using semiconductor materials. This distinguishes solar PV from solar thermal systems, which use sunlight

internal

of or relating to the inside or inner part: the internal organs of the body. Government of or relating to the domestic affairs of a country:[before a noun] a bureau of internal affairs.



Photovoltaic Effect: How Solar Energy Physics Turns Light into

Discovered in the 19th century, the photovoltaic effect occurs when photons, the particles that make up light, strike a material, causing the release of electrons. In solar panels, the

Solar Energy

There are several ways to turn sunlight into usable energy, but almost all solar energy today comes from "solar photovoltaics (PV)." Solar PV relies on a natural property of "semiconductor"



INTERNAL



How do solar panels work? Solar power explained

At a high level, solar panels are made up of solar cells, which absorb sunlight. They use this sunlight to create direct current (DC) electricity through a process called "the photovoltaic effect."



internal adjective

Definition of internal adjective in Oxford Advanced Learner's Dictionary. Meaning, pronunciation, picture, example sentences, grammar, usage notes, synonyms and more.



How do solar panels work? Solar

You use internal to describe things that exist or happen inside a place or organization.



IRM , Internal Revenue Service

Internal Revenue Manuals Table of Contents
Download IRM Source Files (XML) - Directory List of File Names



Solar PV Energy Factsheet

Solar energy can be harnessed two primary ways: photovoltaics (PVs) are semiconductors that generate electricity directly from sunlight, while solar thermal technologies use sunlight to heat water for

power explained

At a high level, solar panels are made up of solar cells, which



How does solar energy transform internal energy? , NenPower

Solar energy plays a pivotal role in transforming internal energy, specifically through the mechanisms of capturing sunlight and converting it into usable power.

How does solar power work? , National Grid

Learn how solar power works, from the photovoltaic effect to AC conversion, with clear explanations of clean, renewable solar energy and panel technology.



internal

Adjective internal (comparative more internal, superlative most internal) Of or situated on the inside. We saw the internal compartments of the machine. (medicine) Within the body.

INTERNAL , English meaning

INTERNAL definition: 1. inside the body: 2. inside a person's mind: 3. inside an object or building: . Learn more.



Theory of solar cells



Photons in sunlight hit the solar panel and are absorbed by semi-conducting materials. Electrons (negatively charged) are knocked loose from their atoms as they are excited. Due to their special

Photovoltaics and electricity

Sunlight is composed of photons, or particles of solar energy. These photons contain varying amounts of energy that correspond to the different wavelengths of the solar spectrum. A PV cell is made of



INTERNAL Definition & Meaning , Dictionary

INTERNAL definition: situated or existing in the interior of something; interior. See examples of internal used in a sentence.

Internal

Define internal. internal synonyms, internal pronunciation, internal translation, English dictionary definition of internal. adj. 1. Of, relating to, or located within the limits or surface; inner.



internal

In anatomy and zoology, in general, inner or interior; not superficial; deep-set; away from the surface or next to the axis of the body or of a part: as, the internal carotid or iliac artery; the internal head of the

Photovoltaics and electricity

Discovered in the 19th century, the photovoltaic effect occurs when photons, the particles that make up light, strike a material, causing the release



How Does Solar Work?

When the sun shines onto a solar panel, energy from the sunlight is absorbed by the PV cells in the panel. This energy creates electrical charges that move in response to an internal electrical field in

Contact Us

For catalog requests, pricing, or partnerships, please visit:
<https://bartstudio.biz>