

Battery energy storage station duty



Overview

Battery storage power stations store electrical energy in various types of batteries such as lithium-ion, lead-acid, and flow cell batteries. These facilities require efficient operation and management functions, including data collection capabilities, system control, and . Energy storage supports the electric grid by storing excess power - such as midday solar - and delivering it when generation is low, including during cloudy days or calm, windless periods. A battery energy storage system (BESS), battery storage power station, battery energy grid storage (BEGS) or battery grid storage is a type of energy storage technology that uses a group of batteries in the grid to store electrical energy.

Battery energy storage station duty



Battery Storage Fact Sheet October 2025

Energy storage supports the electric grid by storing excess power - such as midday solar - and delivering it when generation is low, including during cloudy days or calm, windless periods.

Battery storage power station - a comprehensive guide

These facilities play a crucial role in modern power grids by storing electrical energy for later use. The guide covers the construction, operation, management, and functionalities of these power stations,



Grid-Scale Battery Storage: Frequently Asked Questions

A battery energy storage system (BESS) is an electrochemical device that charges (or collects energy) from the grid or a power plant and then discharges that energy at a later time to provide electricity or

Battery Energy Storage Systems Report

by an agency of the U.S. Government. Neither the U.S. Government nor any agency thereof, nor any of their employees, makes any warranty, expressed or implied, or assumes any legal liability or



Secondary Battery



New Battery

So I think the time has come to replace the main battery. Its the original Volvo 70ah EFB battery that was on the car from new in 2016.. The car starts fine but I keep getting the "Low Battery

My main battery just died, had it replaced with same, and car kept giving me Battery charging, so no stop start. When stop/start worked, it was for about 10 sec, and car would start, with



Household Battery Recycling

Household battery recycling locations Lead-acid batteries, or "automotive type batteries," are banned from disposal. Consumers may bring lead-acid batteries to any Wisconsin retailer that sells these

[RWE connects its first utility-scale battery storage project to the](#)

Excess energy not sent to the grid will be stored in an on-site lithium-ion battery energy storage facility. This storage system, which has up to 548 megawatt hours (MWh) of capacity, will



Energy management strategy of Battery Energy Storage Station

In recent years, the application of BESS in power system has been increasing. If lithium-ion batteries are used, the greater the number of batteries, the greater the energy density, which can

Battery Energy Storage Systems: Main

Considerations for Safe

This webpage includes information from first responder and industry guidance as well as background information on battery energy storage systems (challenges & fires), BESS installation

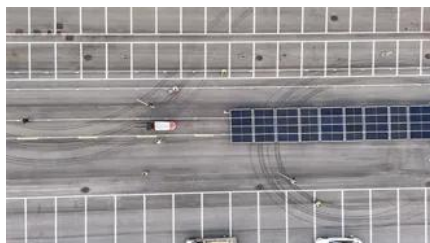


Battery issues

I've had both batteries replaced (with the correct models), done a 100 mile trip, overnight smart battery charge, charging voltage is fine, system messages cleared but I am still getting "low

Low battery charge message

The low battery charge message relates to the main battery. On vehicles with stop/start systems and intelligent alternators, the vehicle battery is designed to operate at around 80% SOC, to



Multiple Warning Lights/Error Messages/Battery deterioration

TBH I would look at a replacement battery on the back of that info - but can't you get one from where you bought it? I don't know what a compliance centre is but does the vehicle come with

Main Battery Change

Going to change the service battery in my 15 V40cc D2. Anything I need to be ware of or look out for ??



Basics of BESS (Battery Energy Storage)



System

Rural Electrification: Expanding access to electricity in remote areas using energy storage as part of decentralized solar microgrids. EV Charging Infrastructure: BESS provides an opportunity for

Battery energy storage system

Overview
Construction
Safety
Operating characteristics
Market development and deployment

A battery energy storage system (BESS), battery storage power station, battery energy grid storage (BEGS) or battery grid storage is a type of energy storage technology that uses a group of batteries in the grid to store electrical energy. Battery storage is the fastest responding dispatchable source of power on electric grids, and it is used to stabilise those grids, as battery storage can transition from standby to full power in u



Low battery charge error , Volvo V40 Forums

Hello everyone, I just bought my first car, a 2014 Volvo V40 T3, and a warning appears on the dashboard that says 'low battery charge.' The car is recently

Replacement battery

Hiya, I have an early 2014 D2 cross country automatic. It keeps complaining about battery level, even after our (rare but very long drives). So I think the battery is shot. Funnily, when I put my



Main Battery Replacement



Battery energy storage system

Since battery storage plants require no deliveries of fuel, are compact compared to generating stations and have no chimneys or large cooling systems, they can be rapidly installed and placed if

Since that battery also supplies power to the ECU memory when the car is switched off, as well as powering the stop/start system , don't ignore it. Like the main battery, Volvo recommend



Utility-Scale Battery Energy Storage Systems

This safety standard, developed by firefighters, fire protection professionals, and safety experts, provides comprehensive requirements and guidance on the design, installation, and operation of energy

Contact Us

For catalog requests, pricing, or partnerships, please visit:
<https://bartstudio.biz>