

How big an inverter should I use for 220V2A



Overview

This means you need an inverter with at least 2.5 kW capacity to handle this load comfortably, factoring in efficiency losses and a safety margin. Use our online tool [Watt to Amp Calculator \(Single & Three-Phase\): Best Tool](#). A properly sized solar inverter typically lasts 10-15 years, though premium or microinverter units can reach 20-25 years with good maintenance. Too large, and you're paying for power. How to determine what size inverter I need?

Before we go any further, we highly recommend that you choose a pure sine wave inverter. An inverter converts DC power (from batteries or solar panels) to 220V AC electricity.

How big an inverter should I use for 220V2A



[What Size Inverter Do I Need? A Comprehensive Guide to Inverter](#)

Proper inverter sizing affects energy efficiency, system longevity, and whether your inverter works well with your battery setup. This inverter sizing guide will take you through the

What Size Inverter Do I Need?

Finding the proper inverter size for your needs is as simple as adding together the necessary wattages of the items that you're looking to power.



Inverter Size Calculator

Calculate the right inverter size for your power needs. Free inverter sizing calculator with surge factor, pure sine wave recommendations, and fuse requirements for RVs, vans, and off-grid systems.

Inverter Capacity Calculator

The inverter capacity calculator helps you find the right inverter size for your home or office. It calculates how much power your devices need, how big the inverter should be, and what



[What Size Inverter Do You Need? A Complete Guide for Home, RV](#)

Choosing the right inverter size is crucial-too small, and your appliances won't work; too large,

and you'll waste money. This guide will help you determine the ideal inverter size for your

[How to Choose the Right Size Solar Inverter: Step-by-Step with Real](#)

This guide walks you through calculating inverter size based on panel capacity, power usage, and safety margins. We use real examples from installations in Texas and Queensland to



Solar Inverter Sizing Guide: How to Size Your Inverter

Learn how to properly size your solar inverter with our complete guide. Discover the optimal DC-to-AC ratio and avoid costly sizing mistakes.

The Only Inverter Size Chart You'll Ever Need

We have created a comprehensive inverter size chart to help you select the correct inverter to power your appliances.



[Inverter Size Calculator Guide: Choose The Right Capacity For Your](#)

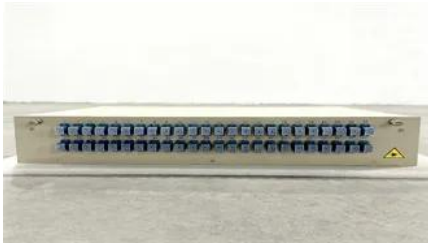
This detailed inverter size calculator guide will help you understand how to match your inverter's capacity to your actual power requirements, with technical insights and practical examples.

The Only Inverter Size Chart You'll Ever Need

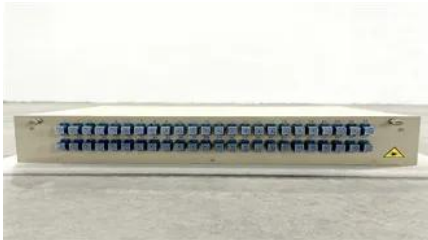
How to Determine What Size Inverter I Need? What Are The Two Types of Power



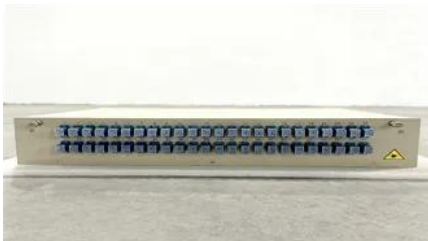
loads? Inverter Size Chart What Will A 300W Inverter Run? What Will A 500W Inverter Run? What Will A 700W Inverter Run? What Will A 1000W Inverter Run? What Will A 1500W Inverter Run? What Will A 2000W Inverter Run? What Will A 3000W Inverter Run? Before we go any further, we highly recommend that you choose a pure sine wave inverter. This type of inverter delivers high-quality electricity, similar to your utility company. This way, none of your appliances run the risk of being damaged. Now, when it comes to sizing your inverter, you always need to check your appliances' wattage and ensure t See more on climatebiz People also ask Loading Unable to load answer



What are the different solar inverter sizes?



How do I choose the right inverter size?



How important is inverter sizing?



What is inverter size?Feedbackkrisha-academy

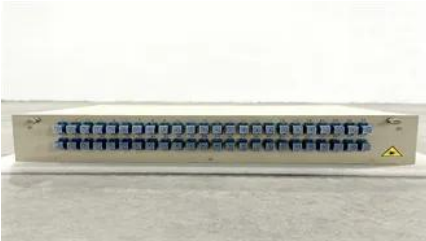
How to Choose the Right-Sized Inverter for 220V Electricity

If you're wondering, "How big of an inverter should I buy to use 220V electricity?", you're not alone. Selecting the correct inverter size is critical for safety, efficiency, and cost-effectiveness. Let's break

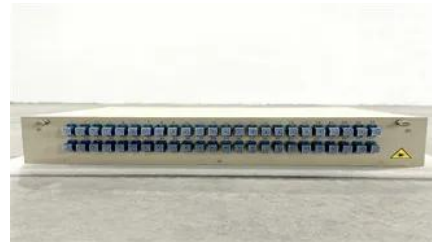


How to Choose the Right-Sized Inverter for 220V Electricity

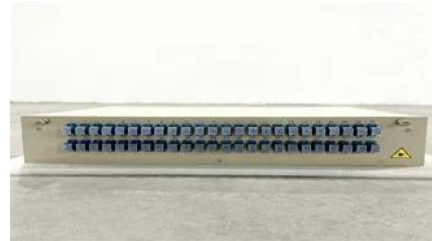
If you're wondering, "How big of an inverter should I buy to use 220V electricity?", you're not alone. Selecting the correct inverter size is critical for safety, efficiency, and cost-effectiveness. Let's break



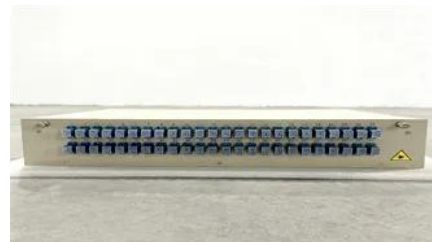
What are the different solar inverter sizes?



How do I choose the right inverter size?



How important is inverter sizing?



What is inverter size? Feedbackkrisha-academy

How to Choose the Right-Sized Inverter for 220V Electricity

If you're wondering, "How big of an inverter

should I buy to use 220V electricity?", you're not alone. Selecting the correct inverter size is critical for safety, efficiency, and cost-effectiveness. Let's break



How to Choose the Right-Sized Inverter for 220V Electricity

If you're wondering, "How big of an inverter should I buy to use 220V electricity?", you're not alone. Selecting the correct inverter size is critical for safety, efficiency, and cost-effectiveness. Let's break

How do I choose the right inverter size?





How important is inverter sizing?



What is inverter size?Feedbackkrisha-academy

How to Choose the Right-Sized Inverter for 220V Electricity

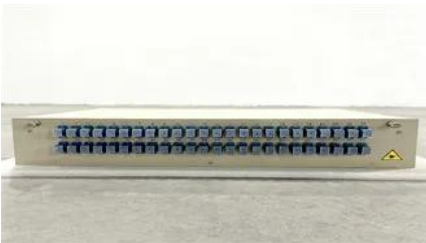
If you're wondering, "How big of an inverter should I buy to use 220V electricity?", you're not alone. Selecting the correct inverter size is critical for safety, efficiency, and cost-effectiveness. Let's break



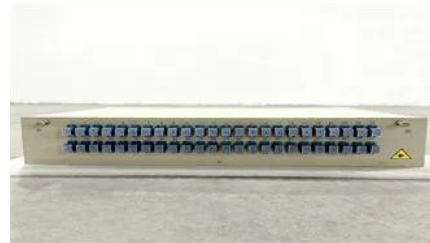
How to Choose the Right-Sized Inverter for 220V Electricity

If you're wondering, "How big of an inverter

should I buy to use 220V electricity?", you're not alone. Selecting the correct inverter size is critical for safety, efficiency, and cost-effectiveness. Let's break



How important is inverter sizing?



What is inverter size?Feedbackkrisha-academy

How to Choose the Right-Sized Inverter for 220V Electricity

If you're wondering, "How big of an inverter should I buy to use 220V electricity?", you're not alone. Selecting the correct inverter size is critical for safety, efficiency, and cost-effectiveness. Let's break



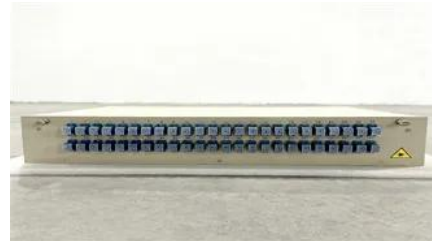
How to Choose the Right-Sized Inverter for 220V Electricity

If you're wondering, "How big of an inverter should I buy to use 220V electricity?", you're not alone. Selecting the correct inverter size is critical for safety, efficiency, and cost-effectiveness. Let's break

What is inverter size?Feedbackkrisha-academy

How to Choose the Right-Sized Inverter for 220V Electricity

If you're wondering, "How big of an inverter should I buy to use 220V electricity?", you're not alone. Selecting the correct inverter size is critical for safety, efficiency, and cost-effectiveness. Let's break



How to Choose the Right-Sized Inverter for 220V Electricity

If you're wondering, "How big of an inverter should I buy to use 220V electricity?", you're not alone. Selecting the correct inverter size is critical for safety, efficiency, and cost-effectiveness. Let's break

Contact Us

For catalog requests, pricing, or partnerships, please visit:
<https://bartstudio.biz>