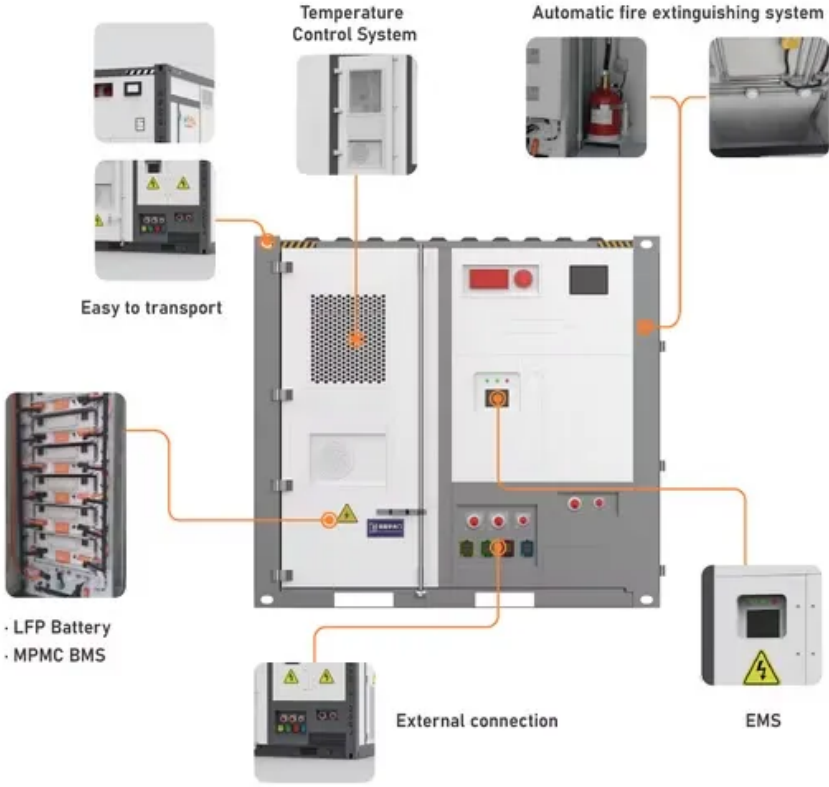


How far is the inverter from a solar container communication station



Overview

In most applications, powerline communication (PLC) can work reliably for distances of up to 250 feet. How far away should . When considering the solar panel inverter distance, one of the first things to remember is how far your inverter and battery are from the main electrical panel. However, if the PV system and the Envoy are isolated from the site load, the communication distance will improve significantly (240 feet or a . How far is the grid-connected distance between the solar container communication station inverters How far is the grid-connected distance between the solar container communication station inverters How far away should a solar panel inverter be?

When considering the solar panel inverter distance . What is the maximum communication distance between the Envoy S Metered and an iq7A micro inverter. For my installation, I want to move my solar panels 80 meters from my envoy s meter gateway. Thanks - Community | Enphase MASSOU_3528 asked a question.

How far is the inverter from a solar container communication station



The safe distance between the solar container communication

When considering the solar panel inverter distance, one of the first things to remember is how far your inverter and battery are from the main electrical panel.

eCFR :: Title 48 of the CFR -

Learn more about the eCFR, its status, and the editorial process.



[Federal Acquisition Regulation; Federal Acquisition Circular 2026-01](#)

This document summarizes the Federal Acquisition Regulation (FAR) rules agreed to by OFPP, DoD, GSA, and NASA (collectively referred to as the Federal Acquisition Regulatory Council)

[The distance between the solar container communication station](#)

How far should a solar panel inverter be from a guest house? In conclusion, managing your solar panel inverter distance by storing the inverter and battery in a guest house and running the lines to the



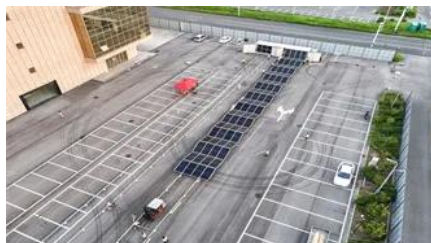
How far is the inverter of the solar container communication



Solar Container Communication Station Inverter Grid

How far can the solar container communication station inverter be connected to the grid Follow the table below for maximum distances for wired communication between system components.

The powerline communication (PLC) can work reliably for distances of up to 250 feet. However, if the PV system and the Gateway (formerly known as Envoy) are isolated from the site load, the



Grid-connected communication distance requirements for

This study focuses on inverter standards for grid-connected PV systems, as well as various inverter topologies for connecting PV panels to a three-phase or single-phase grid, as well as their benefits

FAR , Acquisition.GOV

Federal Acquisition Regulation Full FAR Download in Various Formats Browse FAR Part/Subpart and Download in Various Formats



FAR , Acquisition.GOV

CAAC Consultation to Issue a Class Deviation From the Federal Acquisition Regulation (FAR) Regarding Legal Challenges to Executive Order 14026, Increasing the Minimum Wage for Federal

FAR , FAI.GOV

An official website of the United States government Here's how you know



How far is the grid-connected distance between the solar

The distance between the solar inverter and the main panel is determined by a number of factors, including cable length, inverter technology, and adherence to electrical codes.

The Federal Acquisition Regulation (FAR): Answers to Frequently

The FAR, which is codified in Title 48 of the Code of Federal Regulations (C.F.R.), generally governs acquisitions of goods and services by executive branch agencies.



eCFR :: 48 CFR Chapter 1 -

Learn more about the eCFR, its status, and the editorial process.

[What is the maximum communication distance between the Envoy S](#)

The powerline communication (PLC) can work reliably for distances of up to 250 feet. However, if the PV system and the Gateway (formerly known as Envoy) are isolated from the site load, the



Part 1



Standard distance of solar container communication station inverter

When considering the solar panel inverter distance, one of the first things to remember is how far your inverter and battery are from the main electrical panel. For example, placing your inverter and battery



Home , Acquisition.GOV

Looking for U.S. government information and services?

Federal Acquisition Regulation

The Federal Acquisition Regulation (FAR) is the primary regulation for use by all executive agencies in their acquisition of supplies and services with appropriated funds.



Contact Us

For catalog requests, pricing, or partnerships, please visit:
<https://bartstudio.biz>