

Photovoltaic bracket C-shaped steel base



Photovoltaic bracket C-shaped steel base



Why more and more customers choose WOCNH C-shaped steel

The cross-sectional shapes of C-shaped steel (such as C60, C75, C80, etc.) are designed to easily fit with photovoltaic module frames or clamp, ensuring precise and stable

Photovoltaic Bracket C-Shaped Steel Channel Base Connector

Our main products include steel structure brackets, aluminum alloy brackets, carport brackets, as well as bracket accessories, fasteners, section steel, Angle steel, channel steel, square and rectangular



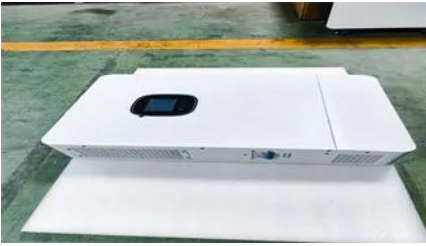
[C-shaped steel photovoltaic bracket_Distributed photovoltaic mounting_](#)

The C-shaped steel photovoltaic bracket system is mainly suitable for ground photovoltaic power stations and concrete flat roof photovoltaic power stations. The system has strong wind resistance, is

[Solar Photovoltaic C-shaped Steel Base Support Bracket Connection_](#)

With 60GW annual production capacity, it becomes one of the largest bracket suppliers in China. NCNF has always paid attention to product quality management. From the entry of raw materials to the





[Tripsolar C Channel Steel Ground Solar Panel Mounting Brackets](#)

Tripsolar C channel steel ground mounting brackets, solar panel ground mount kit is specially design for large scale ground solar projects, and can work with concrete bases or ground screws depending on

C Shaped Steel Ground PV System

Large-Scale Ground-Mounted Photovoltaic Power Stations: C-shaped steel ground mounts are widely used in large-scale ground-mounted photovoltaic power stations, capable of supporting a large



[Solar Photovoltaic C-shaped Steel Base Support Bracket Connection](#)

?Materials?:Carbon steel, Aluminium or Stainless Steel tube or sheet pieces. ?Usage? :Solar Mounting System,Agricultural machine ,Machinery, fitness equipment, stoller or scooter frame,

[Solar Photovoltaic C-Channel Open Base Connector , Steel Mounting Bracket](#)

High-strength C-shaped steel open base connector for solar PV mounting systems. Designed for ground-mounted installations, offering easy installation, strong load capacity, and reliable long-term



C Shaped Steel Ground PV System

The serrated edges of the C-shaped steel enhance shear resistance, anti-slip, and impact resistance, providing robust performance. Moreover, the system's rational bracket design facilitates easy

Contact Us

For catalog requests, pricing, or partnerships, please visit:
<https://bartstudio.biz>