

Photovoltaic controller and combiner box functions



Overview

Combiner boxes, isolator switches, and disconnects are the traffic controllers of your solar array. They manage the flow of power, provide vital protection, and allow for safe maintenance. Understanding their roles is fundamental to building a reliable and long-lasting solar and . A solar combiner box is a crucial component in solar energy systems, designed to consolidate the outputs of multiple solar panel strings into a single output that connects to an inverter. This guide explains how combiner boxes work, how they have evolved .

Definition and Core Functions of the Solar Combiner Box A Residential Solar Combiner Box (also known as a PV Combiner Box, a critical component often analyzed by industry leaders like Solar Power World) is an electrical enclosure within a PV system. This helps keep wiring organized and simplifies system management.

Photovoltaic controller and combiner box functions



Everything You Need to Know About PV Combiner Box

Learn everything about PV Combiner Boxes-how they work, key components, installation tips, and FAQs to optimize your solar power system safely and efficiently.

The Ultimate Guide to Solar Combiner Boxes: From Basics to

Explore the comprehensive guide to PV Solar Combiner Boxes: Learn about types, components, selection criteria, installation best practices, maintenance, and advanced technologies.



Combiner Boxes, Isolators, Disconnects

Combiner boxes, isolator switches, and disconnects are the traffic controllers of your solar array. They manage the flow of power, provide vital protection, and allow for safe maintenance.

APPLICATION NOTE DC COMBINER BOX IN PHOTOVOLTAIC

The main objectives of this annex are to define the requirements for these PV-specific devices and to establish the testing protocols necessary to ensure that their performance aligns with



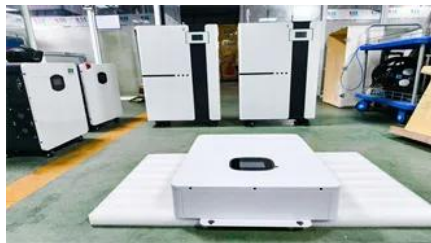
[A Comprehensive Guide to Combiner Boxes in Photovoltaic Systems](#)



[Understanding PV Combiner Boxes: Design, Function, Protection, and](#)

A complete guide to PV combiner boxes, covering structure, safety protection, monitoring, IP ratings, selection principles, and future smart trends. Learn how advanced combiner

This comprehensive guide aims to shed light on the importance, functions, types and best practices of combiner boxes, unlocking the mystery behind their role in harnessing solar energy.



[How Does a Solar Combiner Box Work? Functional Principles and](#)

The LSP Solar Combiner Box shows clearly how does a solar combiner box work by combining power from multiple solar panel strings into one DC output. A robust busbar ensures

The Ultimate Guide to Residential Solar Combiner Box

The article details its core functions-including current aggregation, surge protection (SPD), and fault isolation-and explains how internal mechanisms like fuses and disconnect



[Solar combiner box: definition, core functions and working principle](#)

What is a Combiner Box? A combiner box is an electrical device used in solar installations to combine the output current from multiple solar panels into a single circuit, improving system

[What Is a Combiner Box in a Solar Panel System?](#)

[Complete Guide](#)

A good combiner box combines current, stops over-current, absorbs surges, and reports live data. These four parts raise safety, speed up service, and protect the inverter.



Contact Us

For catalog requests, pricing, or partnerships, please visit:
<https://bartstudio.biz>