

Photovoltaic panel angle calculation method



Overview

The optimal tilt angle is calculated by adding 15 degrees to your latitude in winter and subtracting 15 degrees from your latitude in summer. Adjusting your panels to the right angle can increase yearly energy yield by up to 20 %. This solar panel angle calculator also allows you . The tilt angle directly influences how much solar radiation your photovoltaic panels capture throughout the year. Panels positioned perpendicular to the sun's rays absorb maximum energy, but the sun's position changes with seasons and your geographic location. For example, if you're at 35°N latitude, a 35° tilt angle is ideal. Factors like roof pitch, shading, and time of day can affect your panel's .

Latitude-Based Angle Calculation Provides Optimal Results: Setting your solar panel tilt angle equal to your location's latitude delivers the best year-round performance, with seasonal adjustments of $\pm 15^\circ$ offering potential 5-10% production improvements for adjustable systems.

Photovoltaic panel angle calculation method



Solar Panel Best Angle , Tilt & Orientation Guide 2025

In this guide, we'll break down the science behind the best solar panel angle, explain how to calculate it based on latitude, show seasonal adjustments, and share competitor-winning insights

Solar Panel Direction & Orientation: 2025 Complete Guide

Discover the optimal direction and angle for solar panels to maximize energy output. Complete guide with calculations, tools, and location-specific recommendations for 2025.



Calculate Your Optimal Solar Panel Tilt Angle

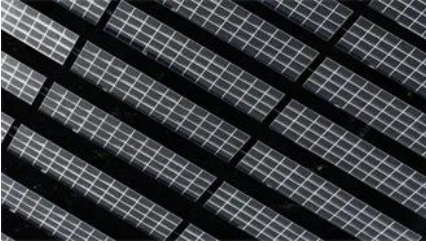
This article aims to guide you through the process of calculating this ideal tilt angle, which varies based on geographic location and time of the year. This guide primarily focuses on determining the optimal

Solar Panel Angle Calculation: Your Ultimate How-To Guide

Learn how to calculate solar panel angle for optimal energy. Discover factors, methods, and tools to maximize solar panel efficiency.



Solar Panel Angle Calculator



This tool estimates the optimal tilt (angle) for a fixed-mount solar panel based on your latitude. Adjusting your panels to the right angle can increase yearly energy yield by up to 20 %.

Solar Panel Tilt Angle Calculation: Complete Guide 2025

In this comprehensive guide, discover how to calculate the ideal angle to maximize your energy savings and system performance. The tilt angle directly influences how much solar radiation



Solar Panel Angle Calculator

Free solar panel angle calculator by latitude and season. Calculate optimal tilt, annual energy output, savings, and CO2 offset for your solar array.

Solar Panel Angle Calculator

Find the best tilt angle for your solar panels by location for optimal year-round, summer, and winter performance. Includes interactive visualizer and advanced options.



Solar Panel Tilt Angle Calculator

Calculate the optimal tilt angle for your solar panels based on your location and seasonal needs to maximize energy production.

Solar Panel Tilt Angle Calculator

Simply enter your address and it will provide the optimal angles for each season, as well as a year-

round average angle for your specific location.
An example of the calculator results.



Contact Us

For catalog requests, pricing, or partnerships, please visit:
<https://bartstudio.biz>