

# **Photovoltaic panel specifications and dimensions 500w**



## Photovoltaic panel specifications and dimensions 500w

---



### [500 Photovoltaic Panel Dimensions and Weight: A Complete Guide for](#)

Summary: Understanding photovoltaic panel dimensions and weight is crucial for solar system design. This guide explores technical specifications, installation insights, and industry trends for 500W solar

### [Daxieworld , 500W Mono , Solar Panel Datasheet , ENF Panel Directory](#)

Detailed profile including pictures, certification details and manufacturer PDF.



### [How to Choose Between 410W, 450W, 500W and 600W Solar Panels: A Size](#)

These three steps allow you to quickly determine which solar panel wattage and dimensions are most compatible with your roof while ensuring both performance and installation

### **182 Mono 500W Technical Data Sheet2094x1134x35**

Mono Power:500W  
Dimensions:82.44\*44.65\*1.38inch  
Characteristics High efficiency solar cell to keep the modules efficiency reach to 21.05%. Positive tolerance to ensure higher output.



### **Tanfon high efficiency 36V mono 96**



## cell 500W solar panel

FSM 500W solar panel features 1) Nominal 36V DC for standard output. 2) High efficiency. 3) Outstanding low-light performance. 4) High transmission tempered glass. 5) Rugged design to

## 500W solar panel

Solar panels: Standard components, monocrystalline single glass, 500W Dimensions: 2098\*1134\*30mm Weight: 25kg per piece Certification: The solar panels have TUV, CQC, CE, US and CB

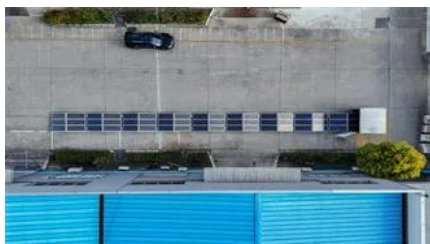


## [A Complete Guide to 500w Solar Panel Size: Specifications, Types, \\_](#)

Discover everything about 500w solar panel size, including key specifications, types, efficiency, and ideal applications for residential, commercial, and off-grid use.

## [How Big is a 500W Solar Panel? Dimensions and Benefits Explained](#)

In this article, we will explore the dimensions of a 500W solar panel, providing you with a clear picture of what to expect when considering solar energy for your home or business. We'll also



## What are the physical dimensions and weight of a 500w panel?

A typical 500W solar panel generally measures around 2279mm in length, 1134mm in width, and is approximately 35mm thick, with a weight of roughly 27 to 30 kilograms (about 60 to 66 pounds).

## Standard Solar Panel Sizes And Wattages (100W-500W Dimensions)

The goal here is to get to the average solar panel size by wattage. You can find typical dimensions of 100W, 150W, 170W, 200W, 200W, 220W, 300W, 350W, 400W, and 500W solar panels summarized



## Contact Us

---

For catalog requests, pricing, or partnerships, please visit:  
<https://bartstudio.biz>