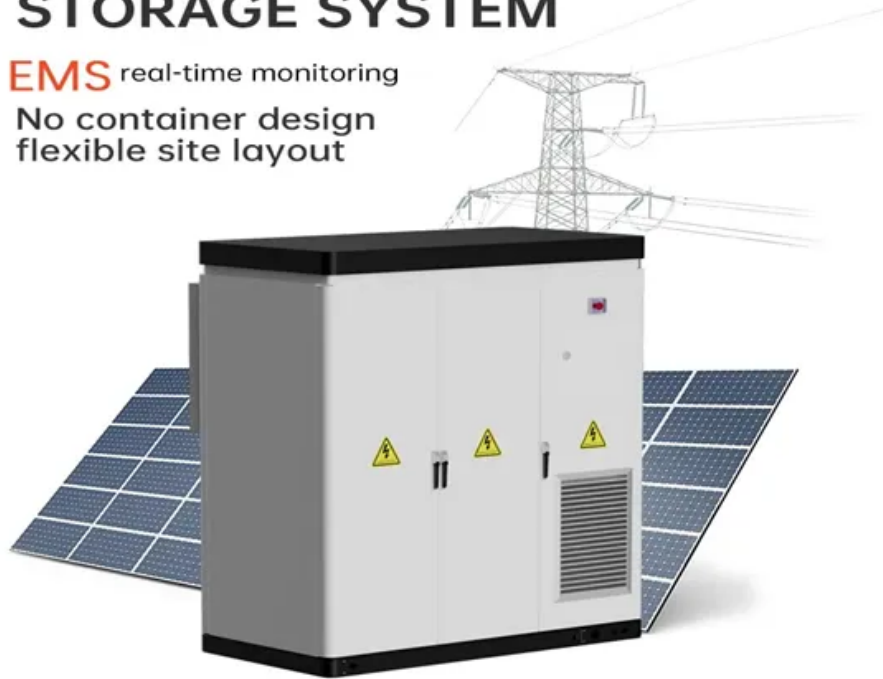


# Soft photovoltaic panel installation specifications and standards

## LIQUID COOLING ENERGY STORAGE SYSTEM

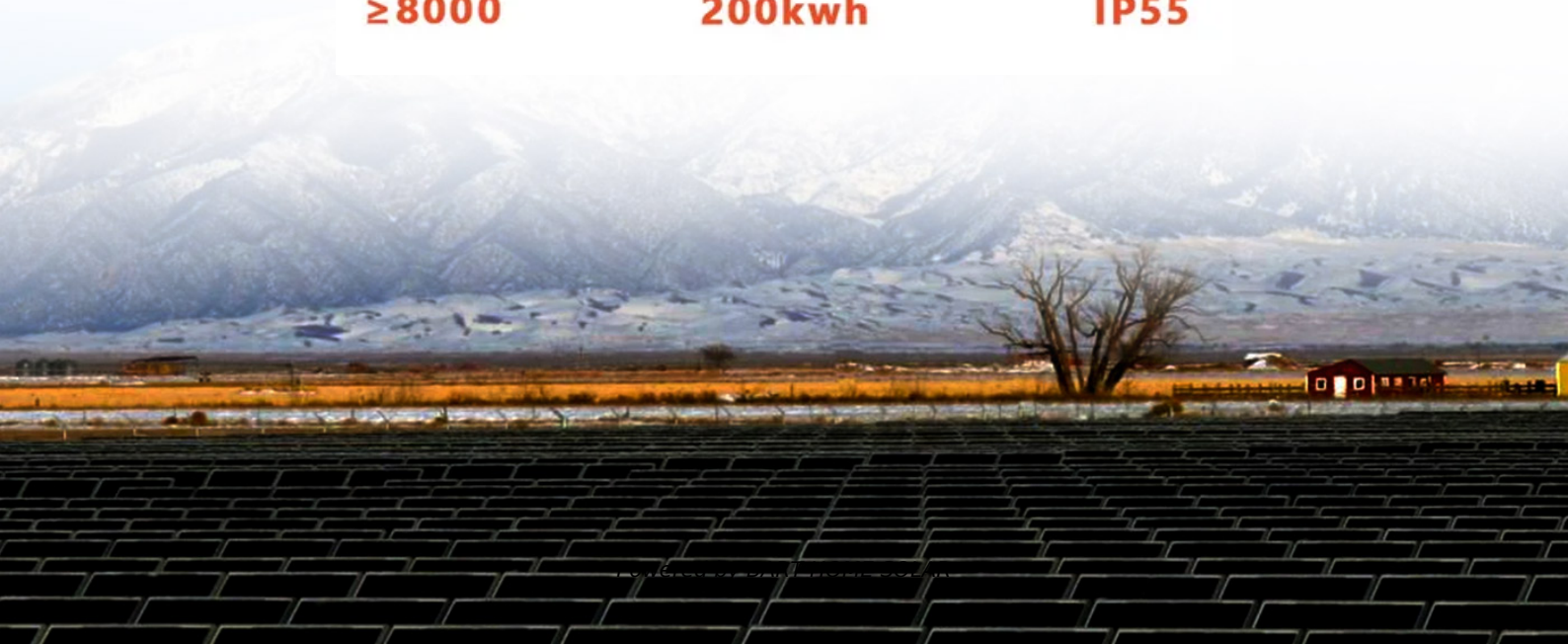
**EMS** real-time monitoring  
No container design  
flexible site layout



Cycle Life  
**≥8000**

Nominal Energy  
**200kwh**

IP Grade  
**IP55**



## Overview

---

Understanding photovoltaic (PV) roof panel specifications and dimensions is critical for optimizing energy output, cost efficiency, and structural compatibility. This guide breaks down key technical parameters, industry trends, and practical considerations to help you make . The Renewable Energy Ready Home (RERH) specifications were developed by the U. Environmental Protection Agency (EPA) to assist builders in designing and constructing homes equipped with a set of features that make the installation of solar energy systems after the completion of the home's . To install soft solar panels, one must follow a series of systematic steps to ensure optimal performance and durability. Understand the structure of soft solar panels, which are lightweight and flexible, making them suitable for various installations. Gather necessary tools and materials . ies have addressed these topics and how they impact the implementation of solar policy goals. The guide develops recommendations and considerations for each topic area based upon review of numerous state and local solar programs and in consultat gers, solar installers, cons on of rooftop solar PV . Optimal Performance Through Flexibility: Flat roofs offer superior energy production potential compared to sloped roofs because panels can be positioned at the ideal tilt angle (15-40 degrees) and orientation regardless of building direction, often resulting in 10-15% higher energy yields. Commercial use by those not holding a valid icence to use the MCS mark is prohibited. In the context of t role to play in the future of UK energy. MC heat pumps, biomass, and battery storage. (hereafter referred to as "JA Solar).

## Soft photovoltaic panel installation specifications and standards

---



### JA SOLAR PV MODULES INSTALLATION MANUAL

The mechanical and electrical installation of PV systems should be performed in accordance with all applicable codes, including electrical codes, building codes and electric utility interconnect

### MCS 2025 Solar PV : Installation Standard

4.1.1 The solar PV system shall be commissioned according to a documented procedure to ensure that the system is safe, has been installed in accordance with the requirements of this Standard and the



### [Standards and Requirements for Solar Equipment, Installation.](#)

the National Electrical Code, and Underwriters Laboratories product safety standards [such as UL 1703 (PV modules) and UL 1741 (Inverters)], which are design requirements and testing

### pvgis

Whether you're planning a DIY solar installation or hiring professionals, you'll discover the essential techniques, costs, and regulations needed to successfully install photovoltaic systems on your property.



### Flat Roof Solar Installation: Complete Guide 2025



### **Solar Photovoltaic: SPECIFICATION, CHECKLIST AND GUIDE**

By following the specification, a builder should feel confident that the proposed array location on a home, built to the RERH specification, will provide a suitable installation environment for a fully operational

Complete guide to flat roof solar installation. Learn mounting methods, costs, benefits, and find qualified installers. Expert tips included.



### **Global Installation Guide for Suntech Power**

This installation manual contains important electrical and mechanical installation information as well as safety information that you must be familiar with, providing important safety instructions for the

### [Photovoltaic Roof Panel Specifications and Dimensions: A Complete](#)

Understanding photovoltaic (PV) roof panel specifications and dimensions is critical for optimizing energy output, cost efficiency, and structural compatibility. This guide breaks down key technical



### **How to install soft solar panels , NenPower**

To install soft solar panels, one must follow a series of systematic steps to ensure optimal performance and durability. 1. Understand the structure of soft sol

## **APPENDIX 2 TECHNICAL SPECIFICATIONS FOR SOLAR PV**

System installation including Photovoltaic modules, Power controller, Batteries, Wiring and cables, Switches, Power points, and Light fixtures shall be done in accordance with the relevant clauses of



## **Contact Us**

---

For catalog requests, pricing, or partnerships, please visit:  
<https://bartstudio.biz>