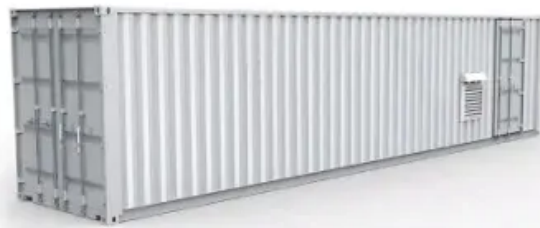


Solar container communication station wind power construction obstacles



Solar container communication station wind power construction obs



Solar Solar Container Communication Station Wind And Solar

The wind-solar-diesel hybrid power supply system of the communication base station is composed of a wind turbine, a solar cell module, an integrated controller for hybrid energy.

[Solar container communication station wind power construction](#)

A globally interconnected solar-wind power system can meet future electricity demand while lowering costs, enhancing resilience, and supporting a stable, sustainable



[About wind power construction of solar container communication stations](#)

This large-capacity, modular outdoor base station seamlessly integrates photovoltaic, wind power, and energy storage to provide a stable DC48V power supply and optical distribution.



[Solar container communication station wind power construction](#)

Can a multi-energy complementary power generation system integrate wind and solar energy? Simulation results validated using real-world data from the



[Solar container communication station wind power construction case](#)



[Adjustment scope of wind power construction for solar container](#)

The invention relates to a wind and solar hybrid generation system for a communication base station based on dual direct-current bus control, comprising photovoltaic arrays, a wind-power



[Solar Container Communication Station Wind Power Construction](#)

Cleanliness standards for wind power in solar container communication stations The role of communications and standardization in wind power This paper provides an in depth overview of the



However, building a global power system dominated by solar and wind energy presents immense challenges. Here, we demonstrate the potential of a globally interconnected solar-wind system to meet



Network solar container communication station wind and solar

This large-capacity, modular outdoor base station seamlessly integrates photovoltaic, wind power, and energy storage to provide a stable DC48V power supply and optical distribution.



Construction Specifications for Wind-Solar Complementary

This study constructed a multi-energy complementary wind-solar-hydropower system model to optimize the capacity configuration of wind, solar, and hydropower, and analyzed the system's

[Wind power generation for solar container communication stations](#)

We evaluate the suitability of solar-wind deployment focusing on three aspects: solar/wind exploitability, accessibility, and interconnectability, as elaborated in Supplementary Table S3.



Contact Us

For catalog requests, pricing, or partnerships, please visit:
<https://bartstudio.biz>