

Solar power generation line connection method



Overview

There are two basic approaches to connecting a grid-tied solar panel system, as shown in the wiring diagrams below. The alternative is a "LINE OR SUPPLY-SIDE" connection made BEFORE the main . Connecting solar power generation lines involves several key steps and elements. Understanding the components, 2. Each of these points plays a significant role in ensuring efficiency and safety . The utility connection for a PV solar system is governed by the National Electrical Code (NEC) Article 690. Always refer to the NEC code in effect or consult a licensed electrician for safety and accuracy. Load-Side Connection Dominates Residential Installations: The 120% rule limits total .

Solar power generation line connection method



[Interconnection Methods , AE 868: Commercial Solar Electric Systems](#)

The equipment and conductors must be rated to accommodate for that additional power coming from the PV system. The interconnection requires tapping the service entrance conductors, and that is done

Solar Interconnection Standards & Policies , US EPA

This report, produced by the National Renewable Energy Lab (NREL), presents results from an analysis of distributed solar interconnection and deployment processes in the United States.



How to connect solar power generation lines , NenPower

Connecting solar power generation lines is a complex task that requires a methodical approach. In the following sections, detailed guidelines will be provided to navigate through the

Beginner's Guide to Solar System Wiring Basics

Discover the basics of solar system wiring-learn about components, connections, safety tips, and diagrams for a solid beginner foundation.



Solar Interconnection Methods (Full Guide)



How Are Solar Farms Connected To The Grid?

Every solar farm is connected to a specific junction on the electrical grid, a massive system of wires that links all power generation plants to every household and commercial establishment that utilizes

A line side tap (or supply side tap) refers to a connection between the meter and main breaker. This is the preferred method of interconnection for solar installers as it is the most straight

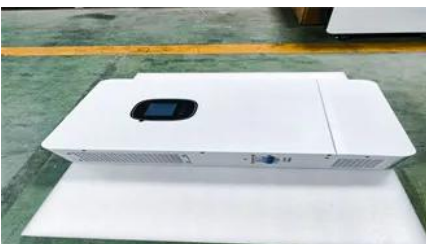


How to connect a PV solar system to the utility grid

There are two basic approaches to connecting a grid-tied solar panel system, as shown in the wiring diagrams below. The most common is a "LOAD SIDE" connection, made AFTER the main breaker.

[How To Connect Solar To Grid: Complete Installation Guide \(2025\)](#)

Learn how to safely connect solar panels to the electrical grid with our comprehensive guide covering permits, installation steps, safety requirements, and code compliance.



How Does a Solar Farm Connect to the Grid?

Unless the solar farm is right next to a transmission line or substation, a dedicated transmission line called a generation tie ("gen-tie") will need to be built.

[Solar Interconnection Methods: Supply-Side And Load-Side Connection](#)

Compare supply-side vs load-side solar interconnections. Understand the 120% rule, NEC requirements, and how to choose the right method for your project.



Solar Interconnection Methods (Full Guide)

A line side tap (or supply side tap) refers to a connection between

Contact Us

For catalog requests, pricing, or partnerships, please visit:
<https://bartstudio.biz>