

# Technical Support for 600mm Deep Power Storage Cabinets



## Overview

---

If you are looking for uninterruptible power protection for server racks or wall cabinets with a 600mm depth, then these rack mount UPS systems could be ideal. The RSH Custom Rackshelf Finder boasts a database of over 11,000 meticulously measured components, and growing every day for our RSH shelves and faceplates. Search for your component and select the . Configure your enclosure with factory-installed accessories to speed deployment. Maximize Performance with an Integrated Cabinet Solution Optimize space, power, cooling, and more with the ZetaFrame® Cabinet System - a fully integrated solution designed for high-density deployments, AI, and HPC. Available in sizes from 6U to 21U. The Lightweight Wall Mounting Cabinets feature fixed profiles and a large cutout panel at the rear.

## Technical Support for 600mm Deep Power Storage Cabinets

---



### Server Racks, Data Center Cabinets & Power Units , Chatsworth

Access product technical support, manage your support cases, and register your product in one place. Configure your enclosure with factory-installed accessories to speed deployment.

### 600mm Wide Server Cabinet - SharkRack

With perforated front and rear doors for front to rear airflow, built-in cable and PDU management, and static load capacity of 3000 lbs., these cabinets satisfy any requirement for mounting mission-critical

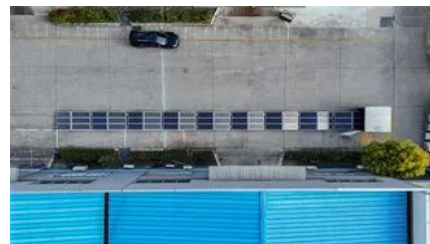


### Homepage

From innovative data rack systems and wall mounts to impenetrable security panels and cabinets.

### [Server Racks, Network Cabinets & Data Center Solutions , Tecmojo](#)

From deployment-ready components to fully assembled rack solutions and multi-site delivery-backed by US-based inventory, local assembly, and responsive support.



### [All-Rack IP66 Wall Mount Data Cabinet 12U 600mm Wide X 600mm Deep](#)

The IP66 Outdoor wall mounting cabinets are



[600mm Wide 600mm Deep Racky Rax Wall Mounted Cabinet , 800mm x 600mm](#)

Our range of 600mm wall mounted data cabinets have been designed with ease of installation and maintenance in mind. The high specification of the cabinet means it's suitable for almost any data

designed to be tough on the environment and gentle on your equipment. Providing IP66 protection against dust and water ingress.



**UPS For Short Depth Cabinets , UPS for 600mm Deep Cabinets**

If you are looking for uninterruptible power protection for server racks or wall cabinets with a 600mm depth, then these rack mount UPS systems could be ideal. They are designed for short depth

**Middle Atlantic , Power & Data, Racks & Technical Furniture**

Offering higher weight capacities, more usable rackspace, and more functionality than any other rack system on the market. The most advanced security rack enclosure, with four available configurations



**600mm Wide x 600mm Deep Data Cabinets & Server Racks , Comms**

The 12U 600mm Wide x 600mm Deep PI Data enclosure/cabinet has been designed to ensure maximum rigidity and weight loading without compromising the versatility of the solution.

[600mm Deep Wall Mount Data Cabinet , 600mm Deep Wall Mounted Data Cabinets](#)

The Lightweight Wall Mounting Cabinets feature fixed profiles and a large cutout panel at the rear. The cabinet is finished in goose grey with a lockable ash grey perspex inset door. 19" Wall Mounted



## Contact Us

---

For catalog requests, pricing, or partnerships, please visit:  
<https://bartstudio.biz>