

# Uninterruptible Power Supply Back Function



## Uninterruptible Power Supply Back Function

---



### Uninterruptible Power Supply: How It Works?

A UPS is a short-term power backup system that delivers electricity instantly when your main power source drops out. Its key purpose is to protect sensitive electronics, prevent data loss,

### Do we need to call `set_current_state` (TASK

Yes, you must call `set_current_state()` before calling `schedule()`, because otherwise the scheduler will not remove the task from the run queue (if you just want to potentially allow other tasks



### Many open files leading to uninterruptible sleep "D state"

An uninterruptible D state is entered when a disk driver is seeking for some data in the disk and the disk has to be waited for for the process to continue. Normally a process sticking on a D

### What Is a UPS? How an Uninterruptible Power Supply Works

An online UPS is a type of uninterruptible power supply that provides backup power to a computer or electronic device by supplying power from a battery or flywheel when the input power is



### What Is a UPS System and How Does It



### Work?

The Uninterruptible Power Supply performs two primary functions: providing instantaneous backup power and regulating the quality of the incoming electricity. During a total blackout, the UPS

### how to find out what it is waiting for

When looking at the process with "ps ax" the stat column is "DI" which means "uninterruptible sleep (usually IO)". Is it possible to find out more details on what the process is



### Eaton UPS fundamentals handbook

Generally used to provide power redundancy to equipment with a single power supply, the eATS automatically transfers power between sources with no interruption if the primary source fails or

### What is a UPS?

Commonly known as a battery backup, an uninterruptible power supply (UPS) is a rechargeable battery used to backup main power feeds and provide seamless power when there is a main line utility



### How a UPS System Works with a Backup Generator

During the gap of time it takes for the generator to start working, the UPS system will instantly switch to battery backup power so none of the connected devices will feel the effect of the

## Uninterruptible power supply

An uninterruptible power supply (UPS) or uninterruptible power source is an electrical apparatus that provides emergency power to a load when the input power source or mains power fails.



## CSM\_UPS\_TG\_E\_1\_1

A UPS, or a uninterruptible power supply, is a device used to backup a power supply to prevent devices and systems from power supply problems, such as a power failure or lightning strikes.

## What is the Function of Uninterruptible Power Supply (UPS)

An Uninterruptible Power Supply (UPS) is a device designed to provide backup power to connected electronic devices when the main power source fails or fluctuates.



## How can I put process into "uninterruptible sleep"?

I'm noticed that process that dumping a core is in uninterruptible sleep, so it can't be killed with SIGKILL, but when I'm trying to emulate this behavior using pipe commands that receives coredump I can

## TASK\_UNINTERRUPTIBLE and process threads in linux kernel

I have a running process which has created multiple user mode threads. If the kernel changes the state of the process to TASK\_UNINTERRUPTIBLE (or TASK\_INTERRUPTIBLE) do the





## Uninterruptible Power Supply: What It Is and How It Works

An uninterruptible power supply (UPS) or uninterruptible power system is an electrical unit that provides power for computers, telecommunication equipment, etc. It not only offers

## What are use cases of making Java method UnInterruptible

What are other use cases that we might want to use the same pattern of uninterruptible code?  
Edit: I just realised I linked it to incorrect method.  
public static boolean

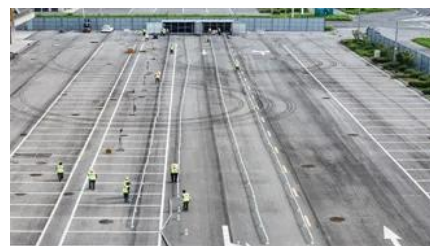


## Does read/write blocked system call put the process in TASK

The Uninterruptible state is mostly used by device drivers waiting for disk or network I/O. When the process is sleeping uninterruptibly, signals accumulated during the sleep are noticed when

## Why there is a state called 'TASK\_UNINTERRUPTIBLE' in Linux

Another question is, if we enable PREEMPT then the linux kernel become a preemptive kernel so at any place when we are handling a syscall in the kernel mode, it may be preempted so



## How to stop 'uninterruptible' process on Linux?

I have a VirtualBox process hanging around which I tried to kill (KILL/ABORT) but without success. The parent pid is 1 (init). top shows the

process as D which is documented as  
"uninterruptible sl

## Contact Us

---

For catalog requests, pricing, or partnerships, please visit:  
<https://bartstudio.biz>